

Paper Reference(s) 1BI0/1F
Pearson Edexcel Level 1/Level 2 GCSE
(9–1)

Biology
PAPER 1
Foundation Tier

Friday 10 May 2024 – Morning

Time: 1 hour 45 minutes

Diagram Booklet

**THIS DIAGRAM BOOKLET MUST BE
RETURNED WITH THE QUESTION PAPER
AT THE END OF THE EXAMINATION.**

**In the boxes below, write your name, centre
number and candidate number.**

Surname					
Other names					
Centre Number					
Candidate Number					

INSTRUCTIONS

There may be spare copies of some diagrams in case you need them.

CONTENTS

Page

4	Question 1(a)
5	Question 1(b)
6–7	Question 2
8	Question 2(b)
9	Question 3(a)
10	Question 3(b)
11	Question 4
12	Question 4(c)
13	Question 5
14	Question 5(b)
15	Question 5(b)(ii)

(continued on the next page)

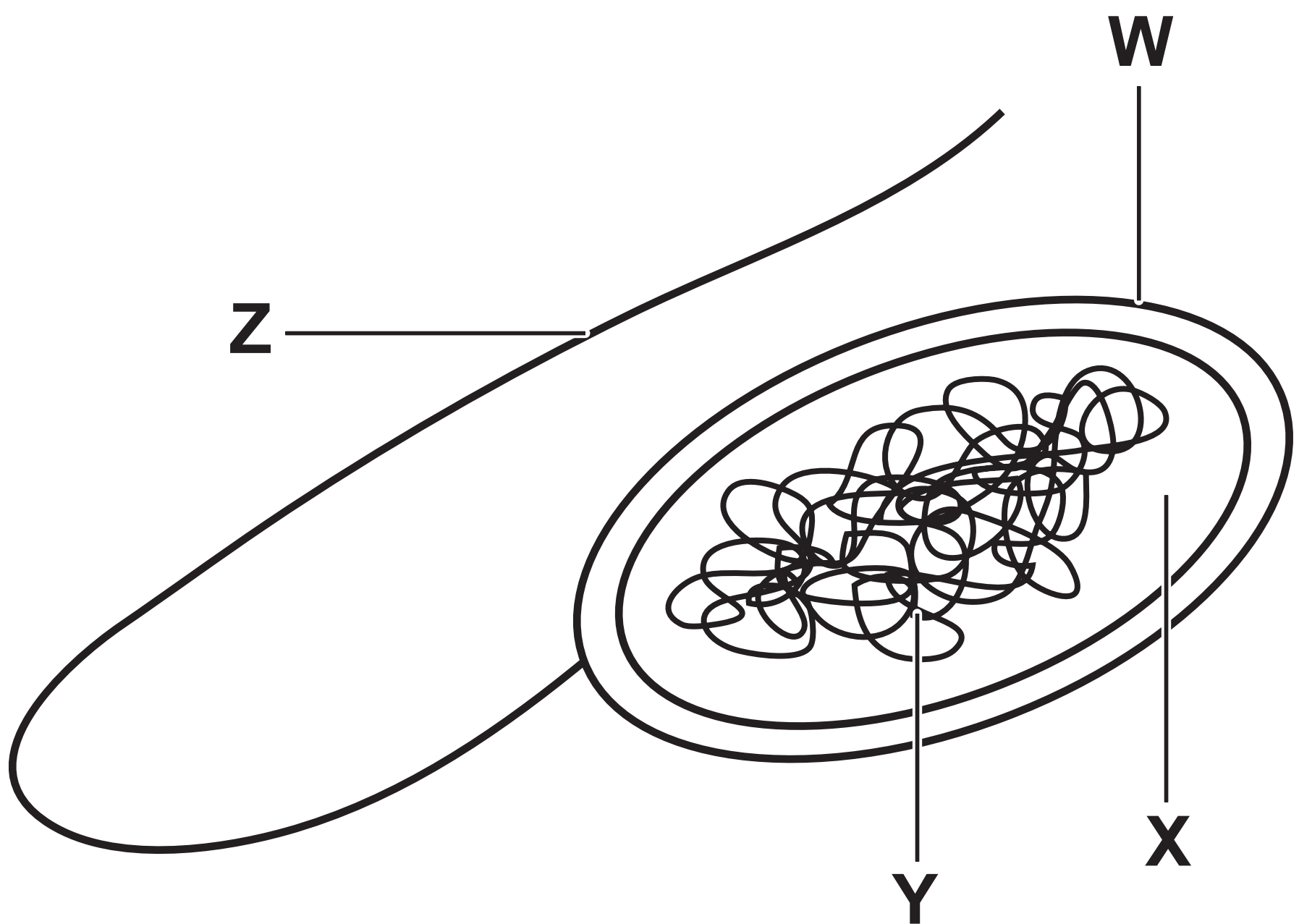
Turn over

CONTENTS continued.

16	Question 5(c)
17	Question 6(b)
18–19	Question 6(d)
20	Question 7(b)
21–22	Question 7(c)
23	Question 8(a)
24	Question 8(b)
25	Question 9(b)
26	Question 9(d)(ii)
27	Question 10(a)
28	Question 10(a)(iii)
Spare Copies	
29	Question 1(b)
30	Question 4(c)
31	Question 8(a)
32	Question 10(a)(iii)

Question 1(a)

FIGURE 1



Question 1(b)

body defence

hydrochloric
acid

skin

function

moves pathogens
away from
the lungs

makes antibodies

destroys
pathogens in
the stomach

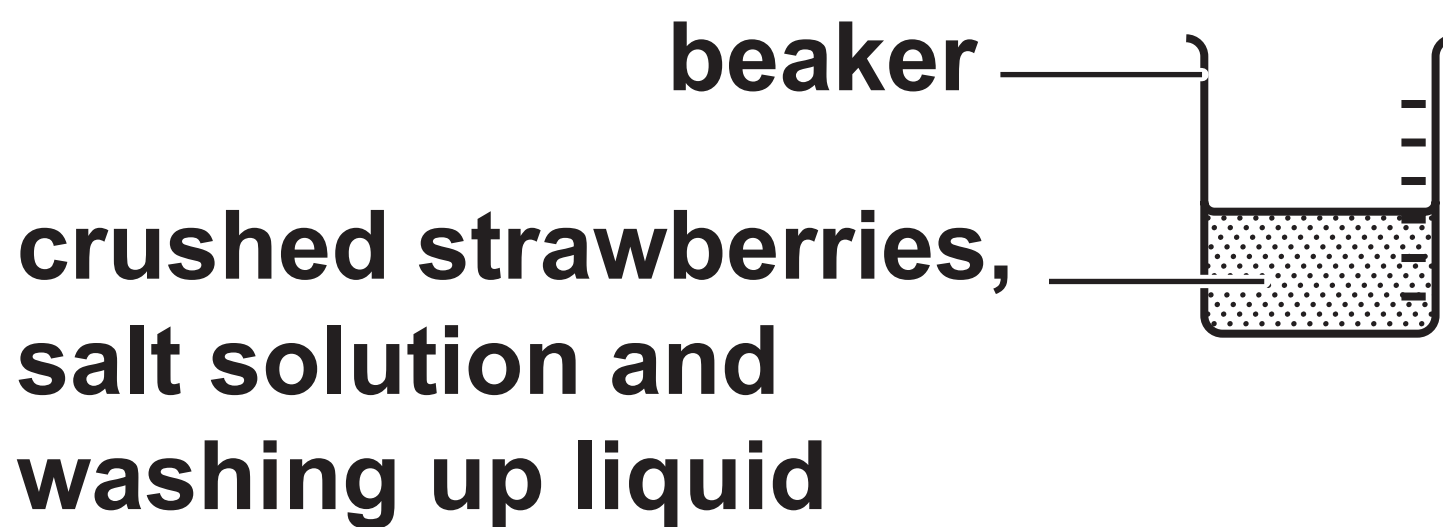
makes antigens

stops pathogens
entering the body

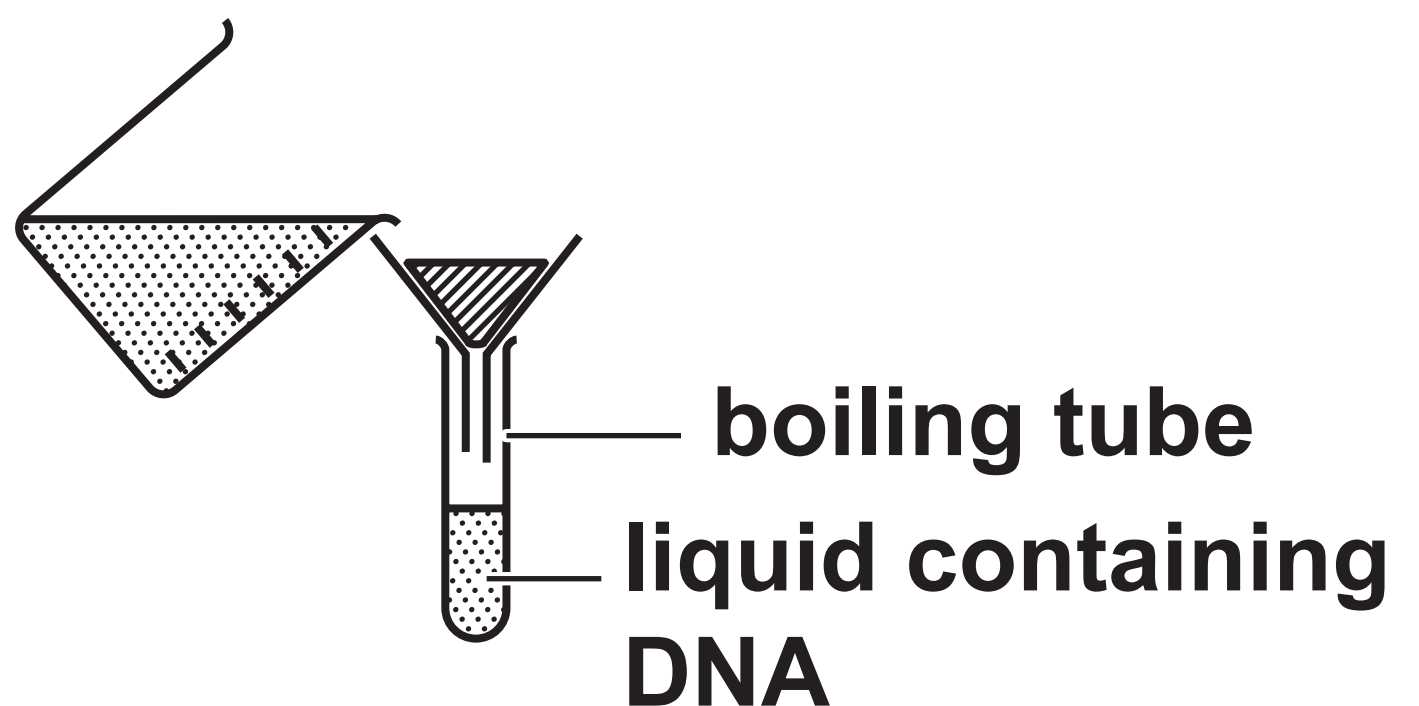
Question 2

FIGURE 2

STAGE 1



STAGE 2



(continued on the next page)

Turn over

Question 2 FIGURE 2 continued.

STAGE 3



STAGE 4



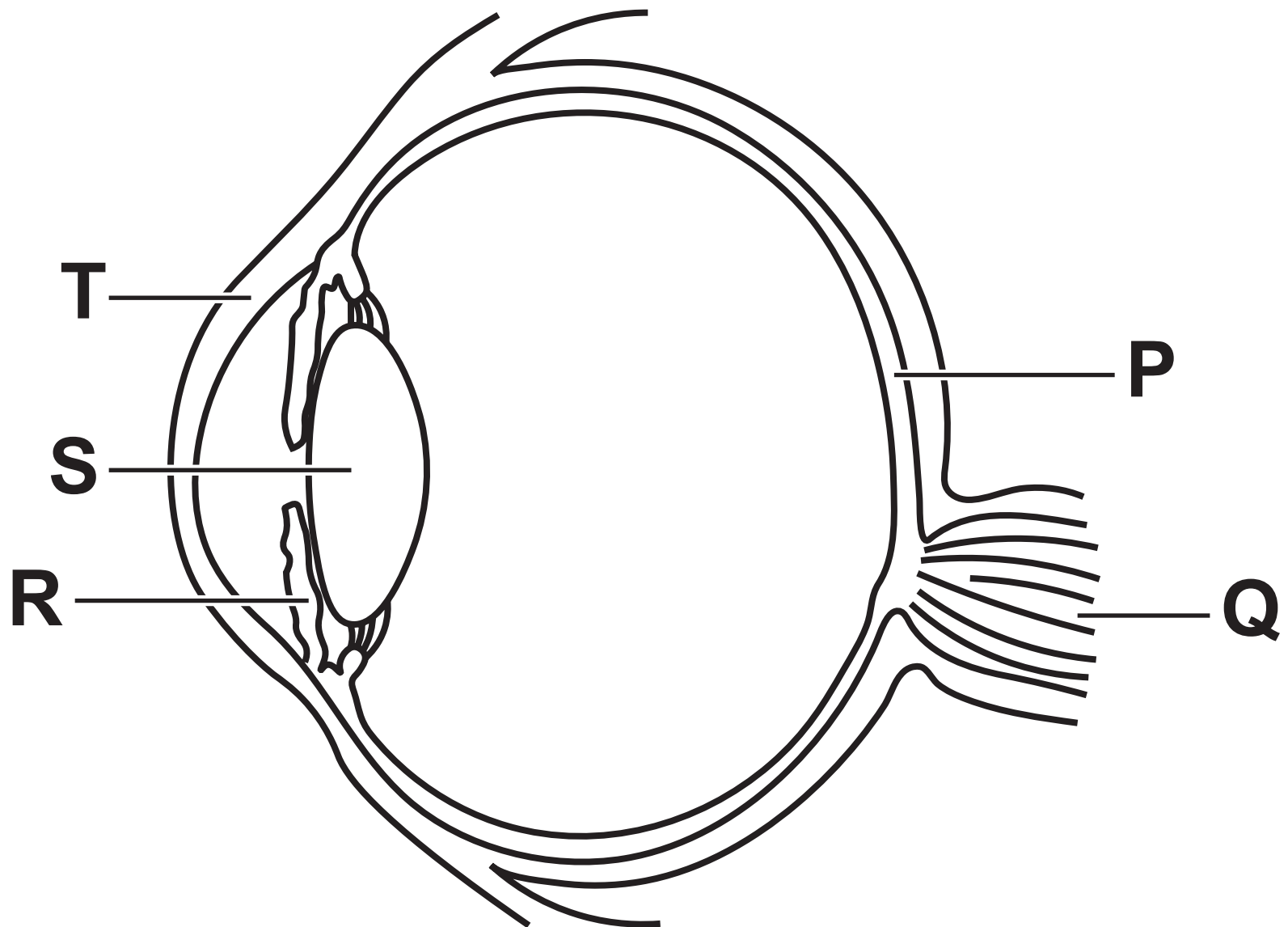
Question 2(b)

FIGURE 3

strawberry	mass of DNA in ng
1	11·8
2	6·5
3	5·9
4	1·4

Question 3(a)

FIGURE 4



Question 3(b)

FIGURE 5

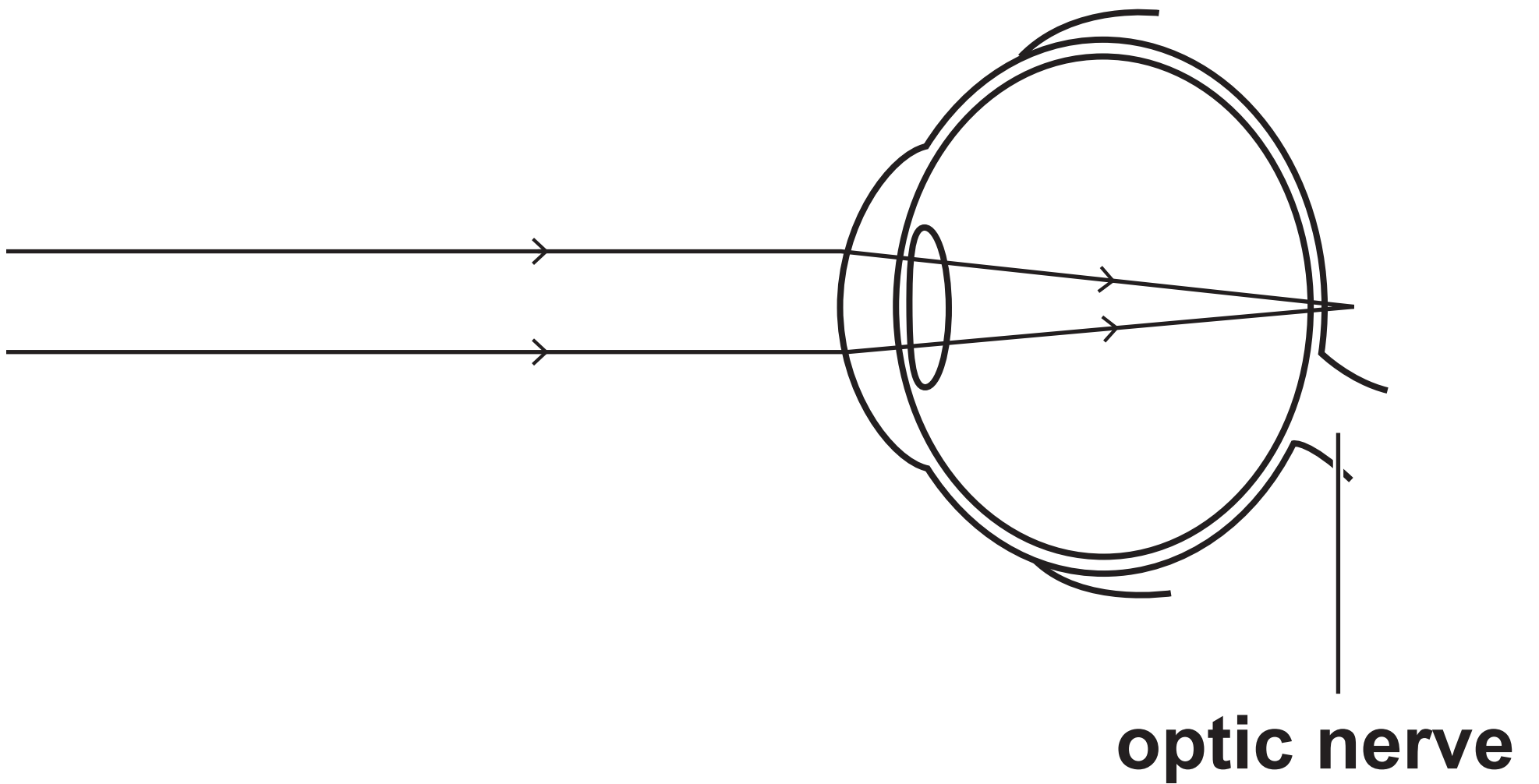




FIGURE 6

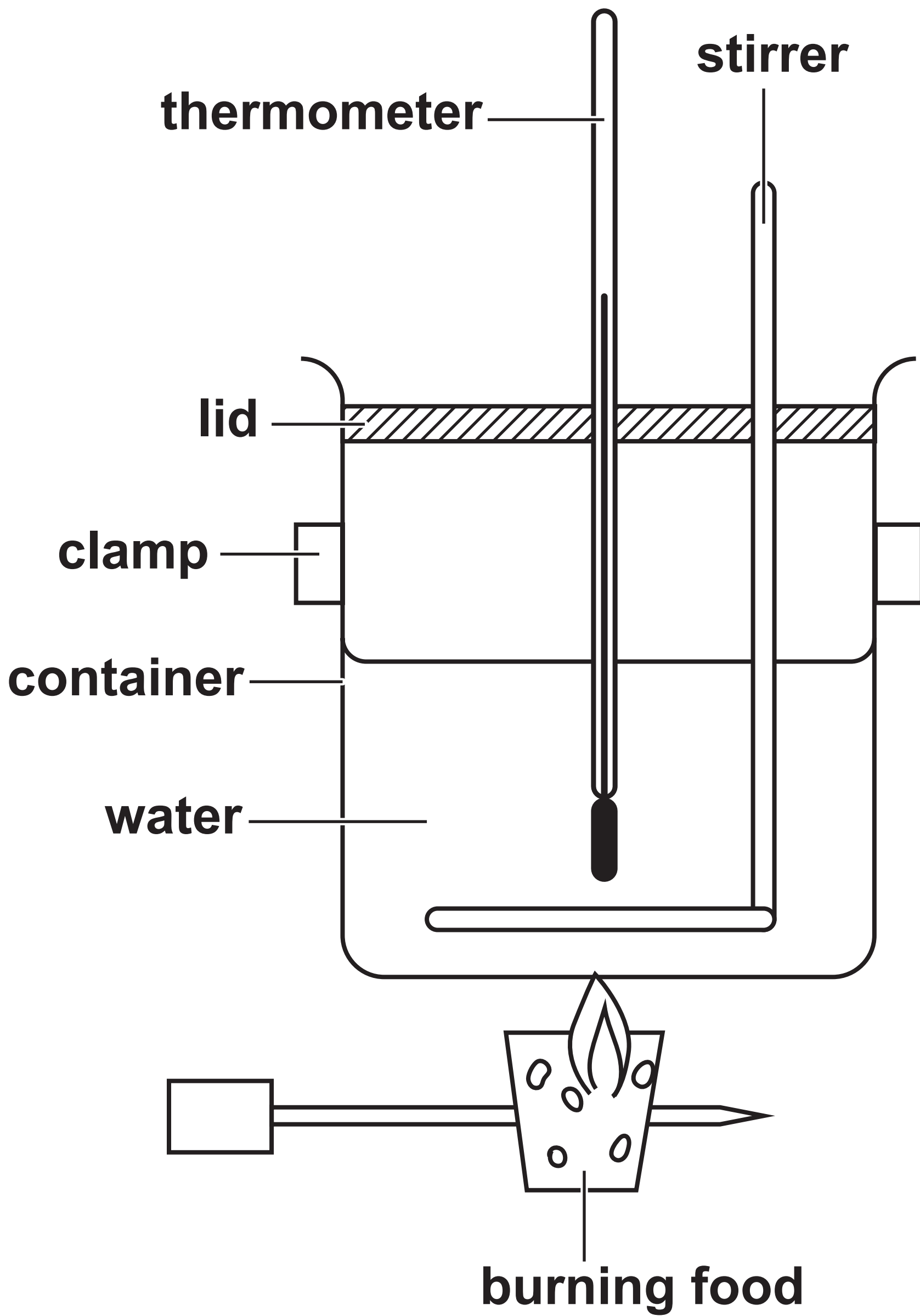
information	red junglefowl	domesticated chicken
photograph		
mass of adult in kg	0.75 to 1.2	2.5 to 3.0
number of eggs laid per year	10 to 15	250 to 300

Question 4(c)

type of cell produced	type of cell division	number of daughter cells produced
body cell	mitosis	
gamete		

Question 5

FIGURE 7



Question 5(b)

FIGURE 8

temperature change in °C	mass of water in g
30	50

Question 5(b)(ii)

FIGURE 9

temperature change in °C	mass of water in g	energy content in J
64	25	6 720

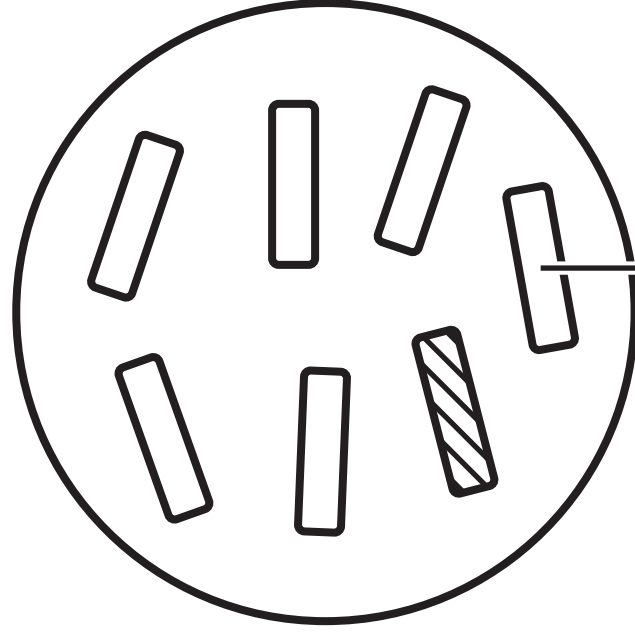
FIGURE 10

food	carbohydrate in g	fat in g	energy in kJ
100 g of apple	14·0	0·2	220
100 g of avocado	9·0	15·0	669

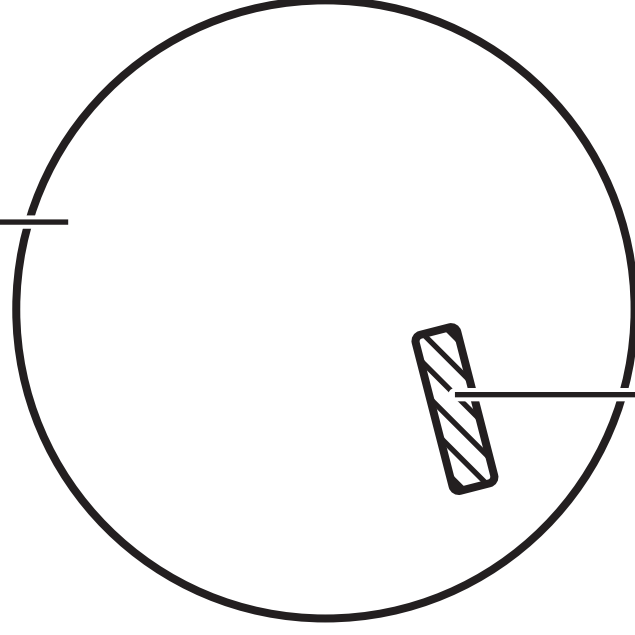
FIGURE 11

agar plate

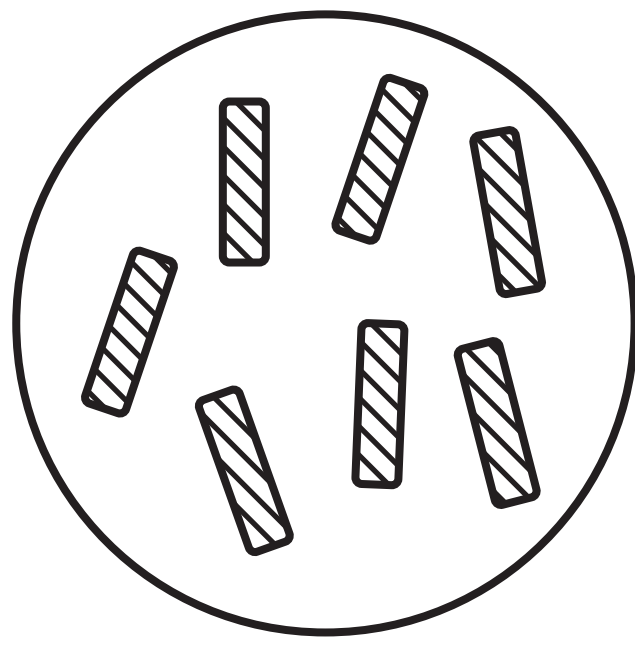
antibiotic
added



non-resistant
bacterium

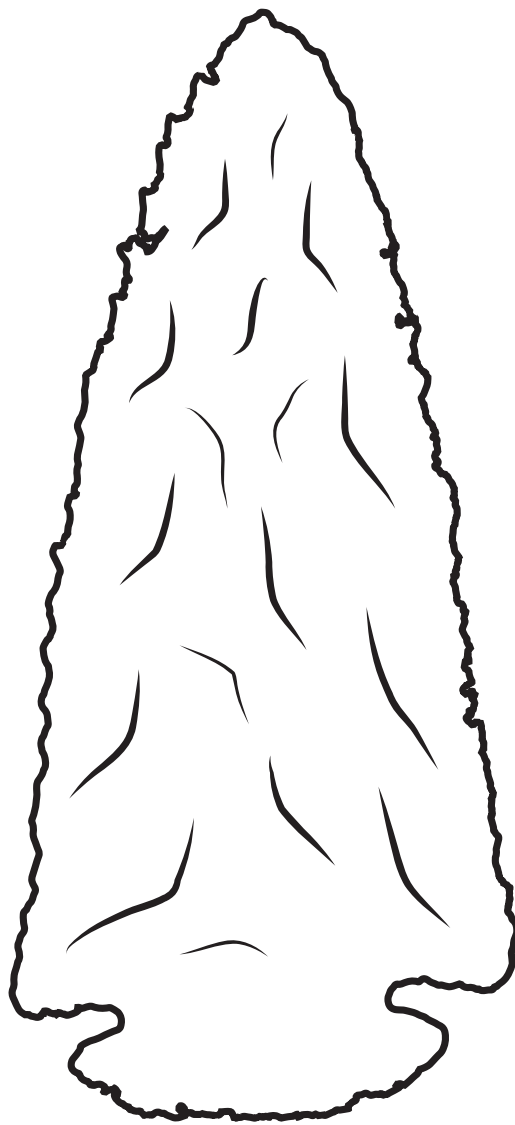


resistant
bacterium



Question 6(d)

FIGURE 12
tool A
approximately
4 000 years old

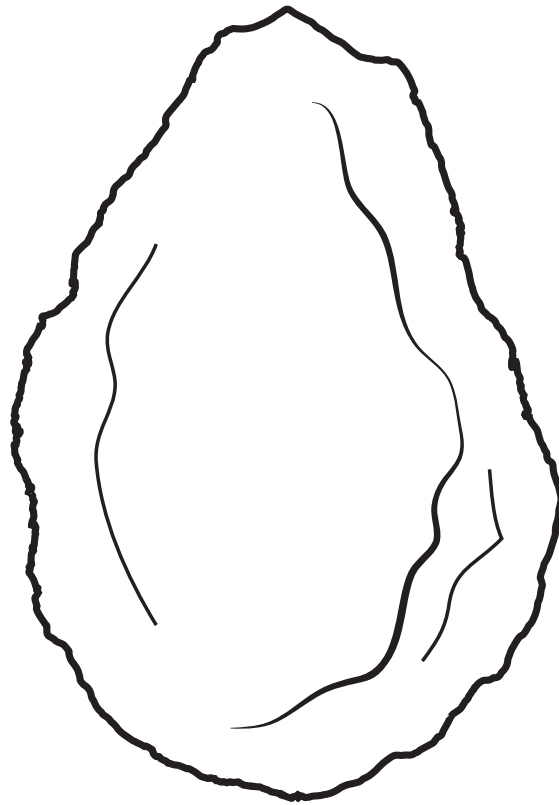


(continued on the next page)

Turn over

Question 6(d) FIGURE 12 continued.

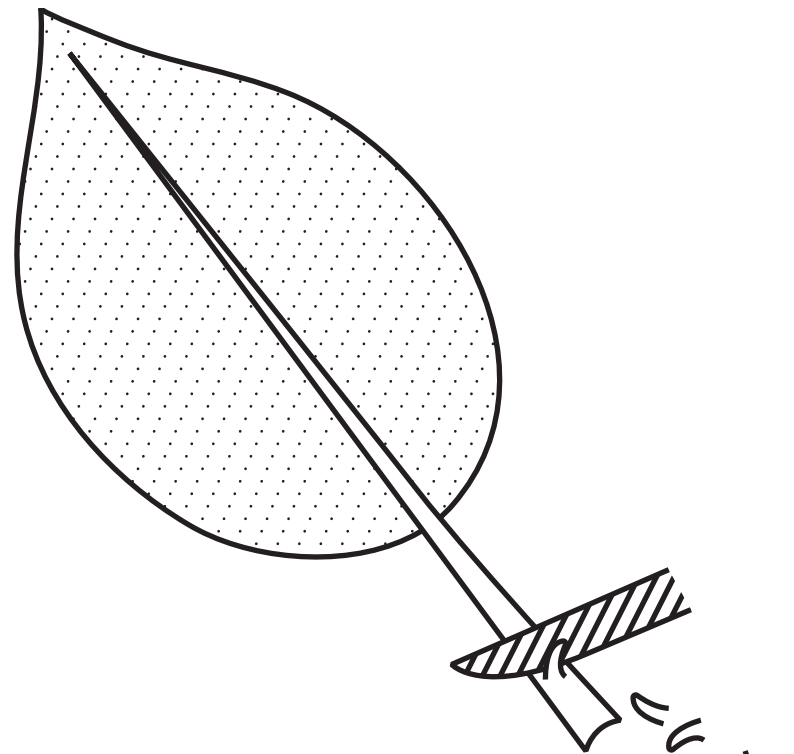
**tool B
approximately
100 000 years old**



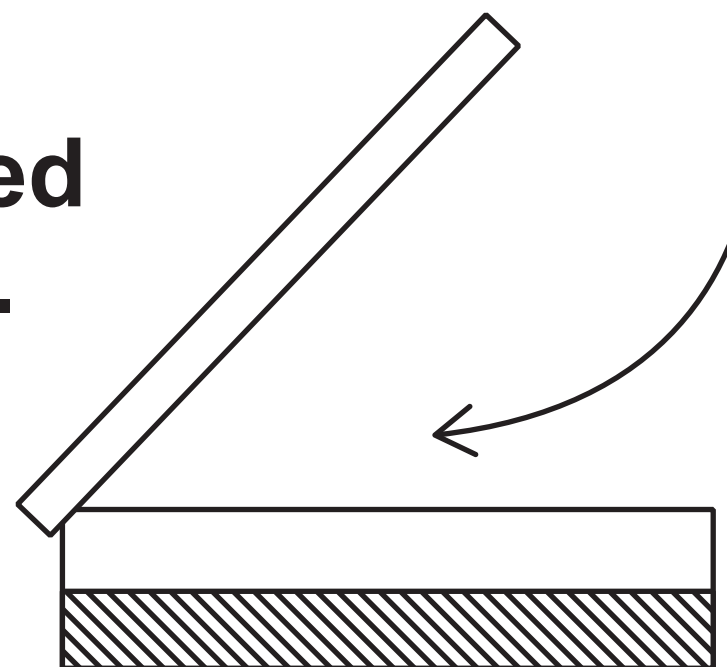
Question 7(b)

FIGURE 13

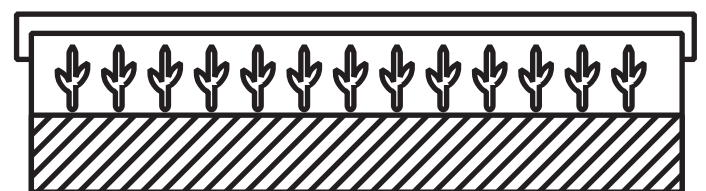
Step 1: Cells are taken from a rare plant.



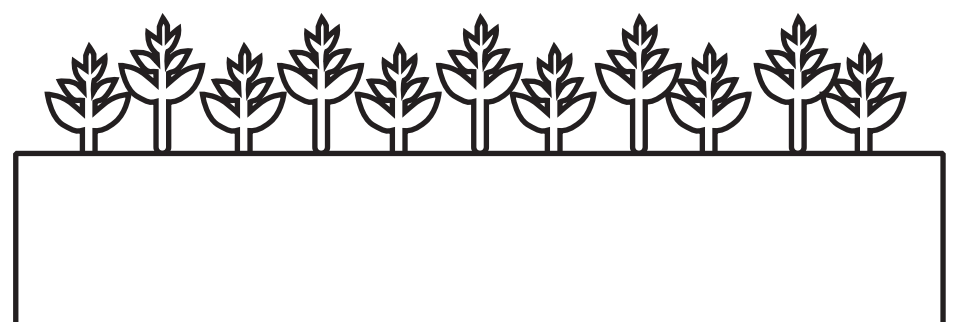
Step 2: The cells are placed on sterile growth medium.

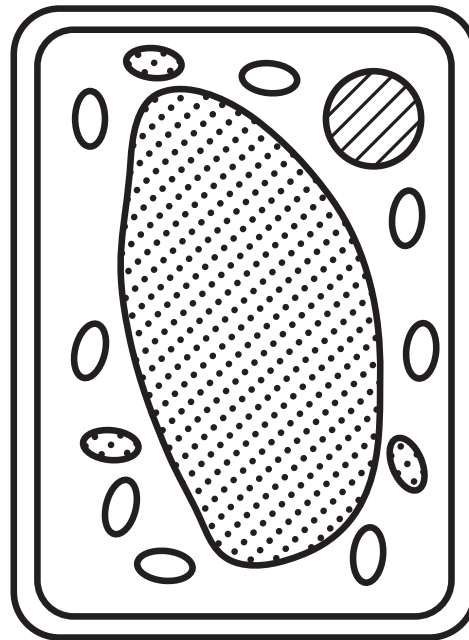
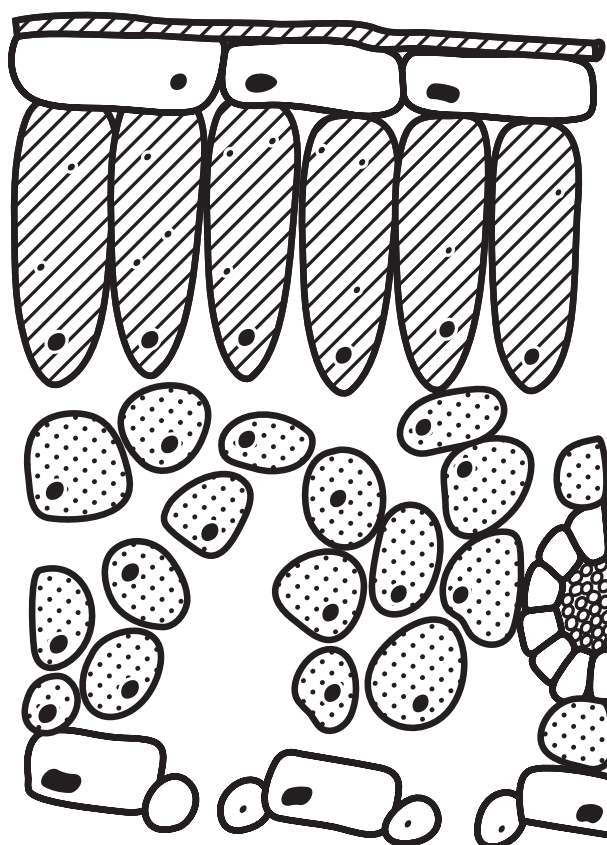


Step 3: The cells develop into small plantlets with roots and stems.



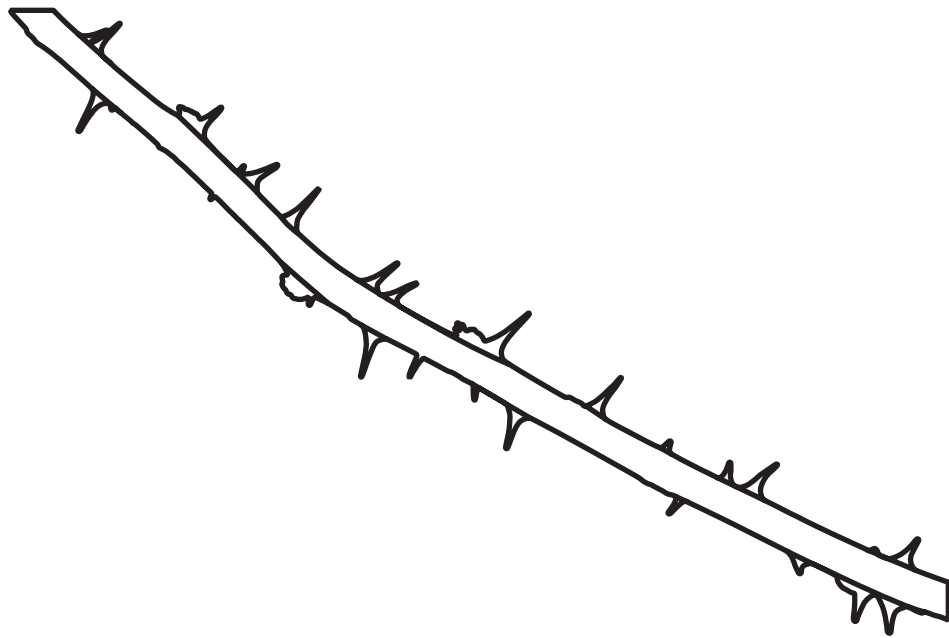
Step 4: The plantlets are grown in compost.



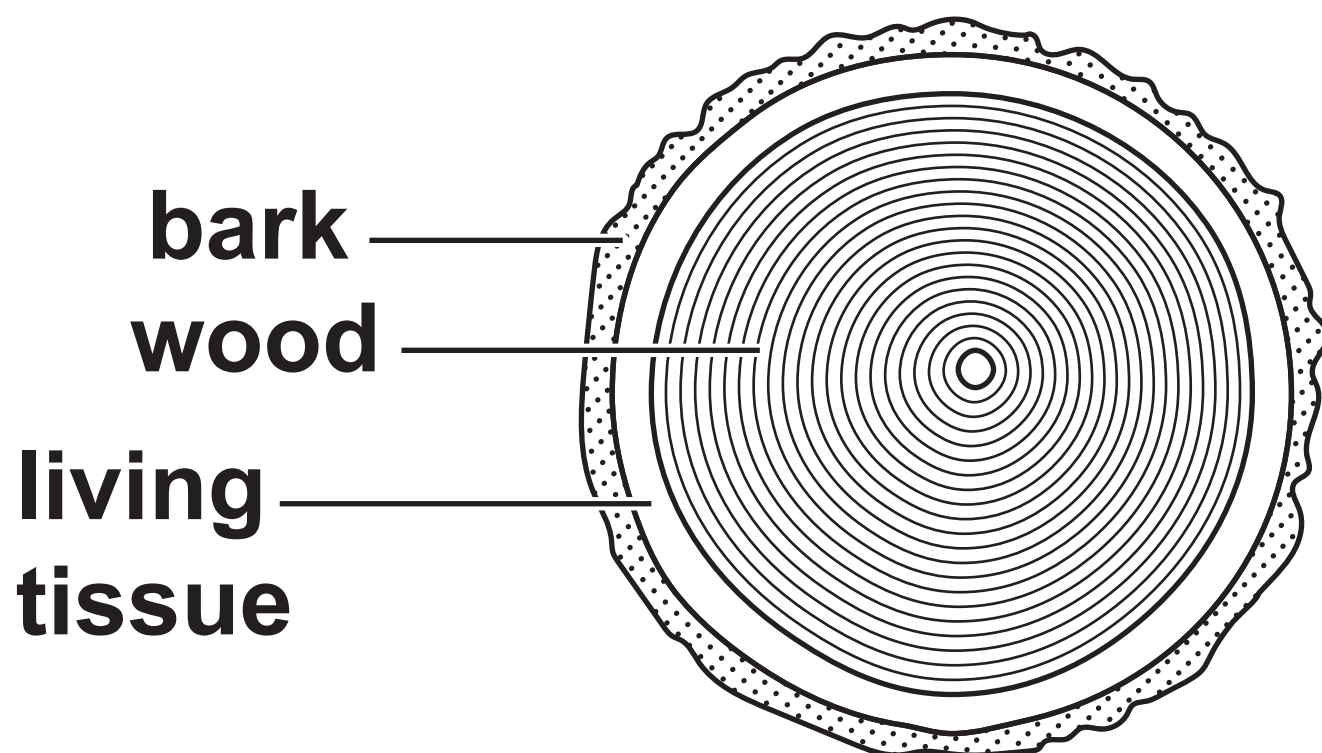
Question 7(c)**FIGURE 14****plant cell****section through a plant leaf****(continued on the next page)****Turn over**

Question 7(c) FIGURE 14 continued.

plant stem



section through a woody stem



Question 8(a)

rate of reaction
in mg per minute

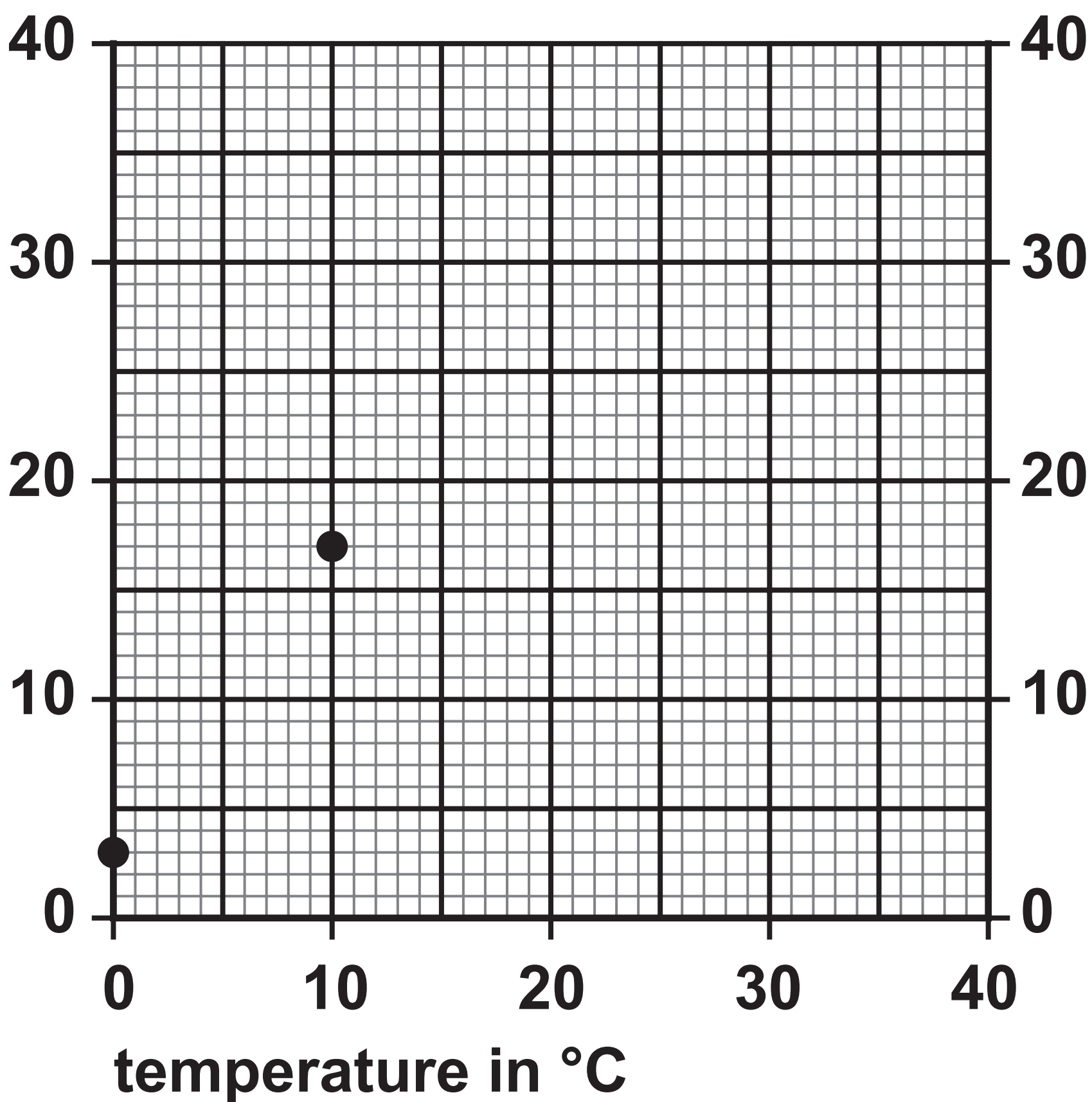
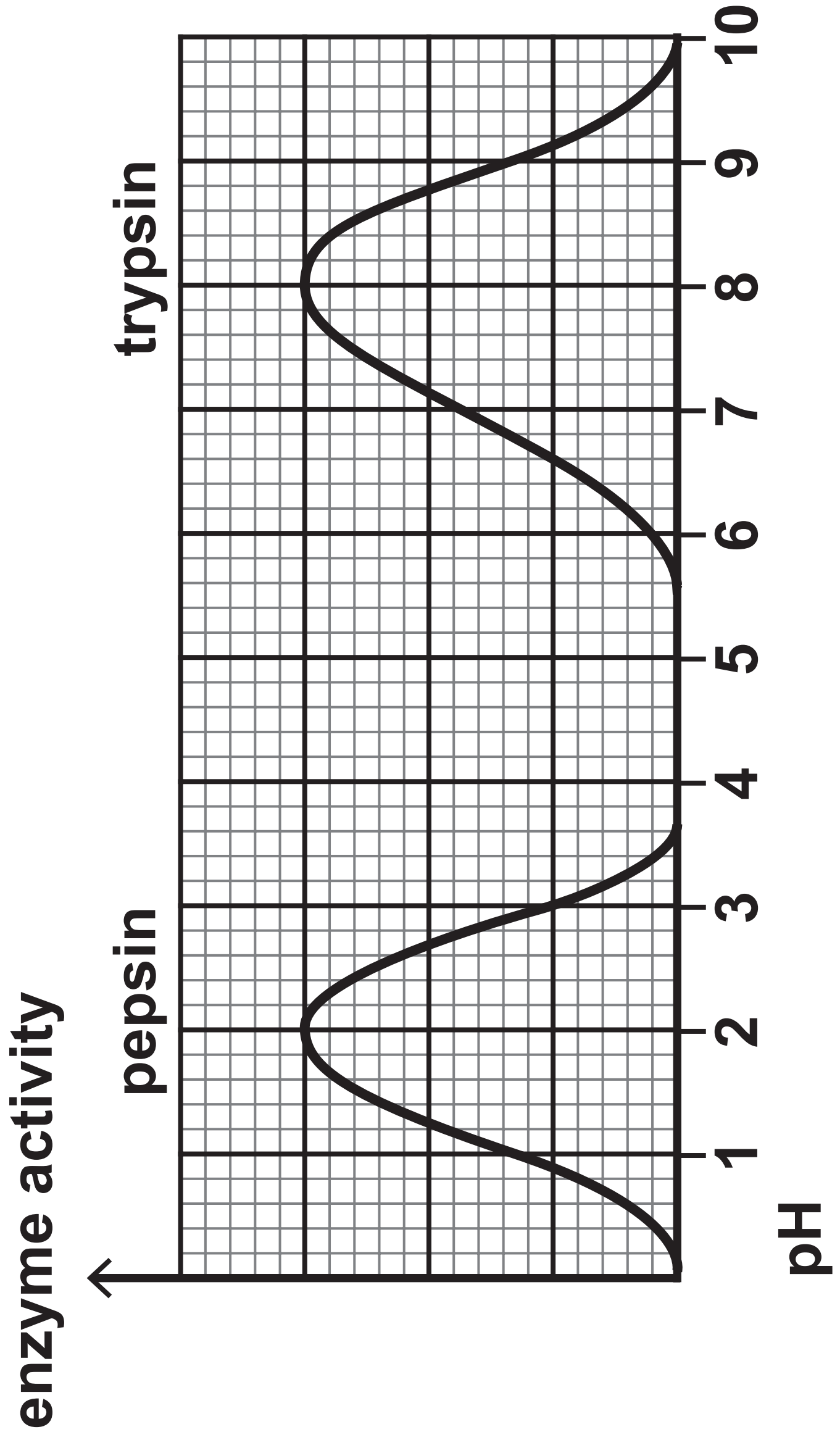


FIGURE 16

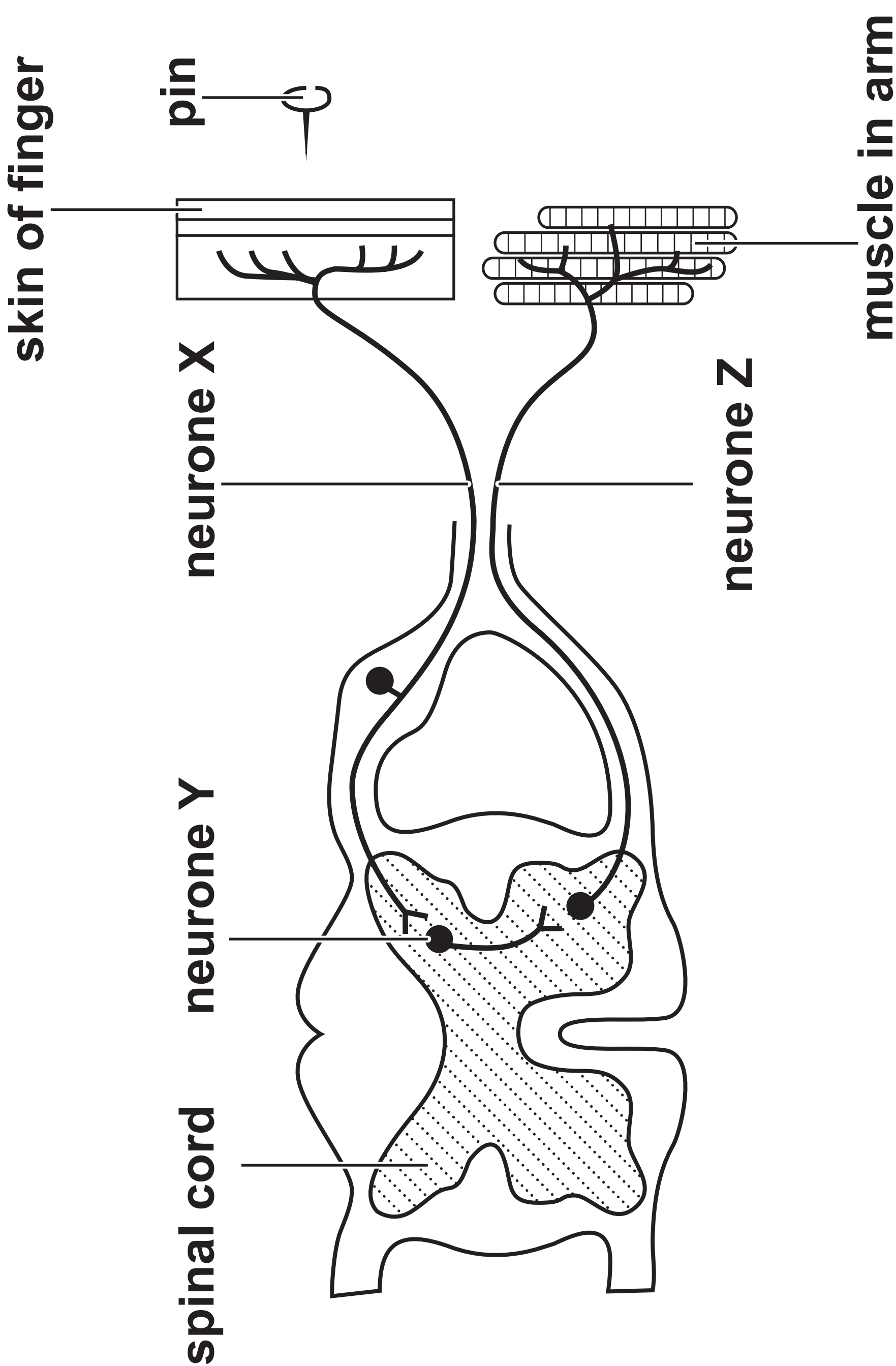


Question 9(b)

FIGURE 17

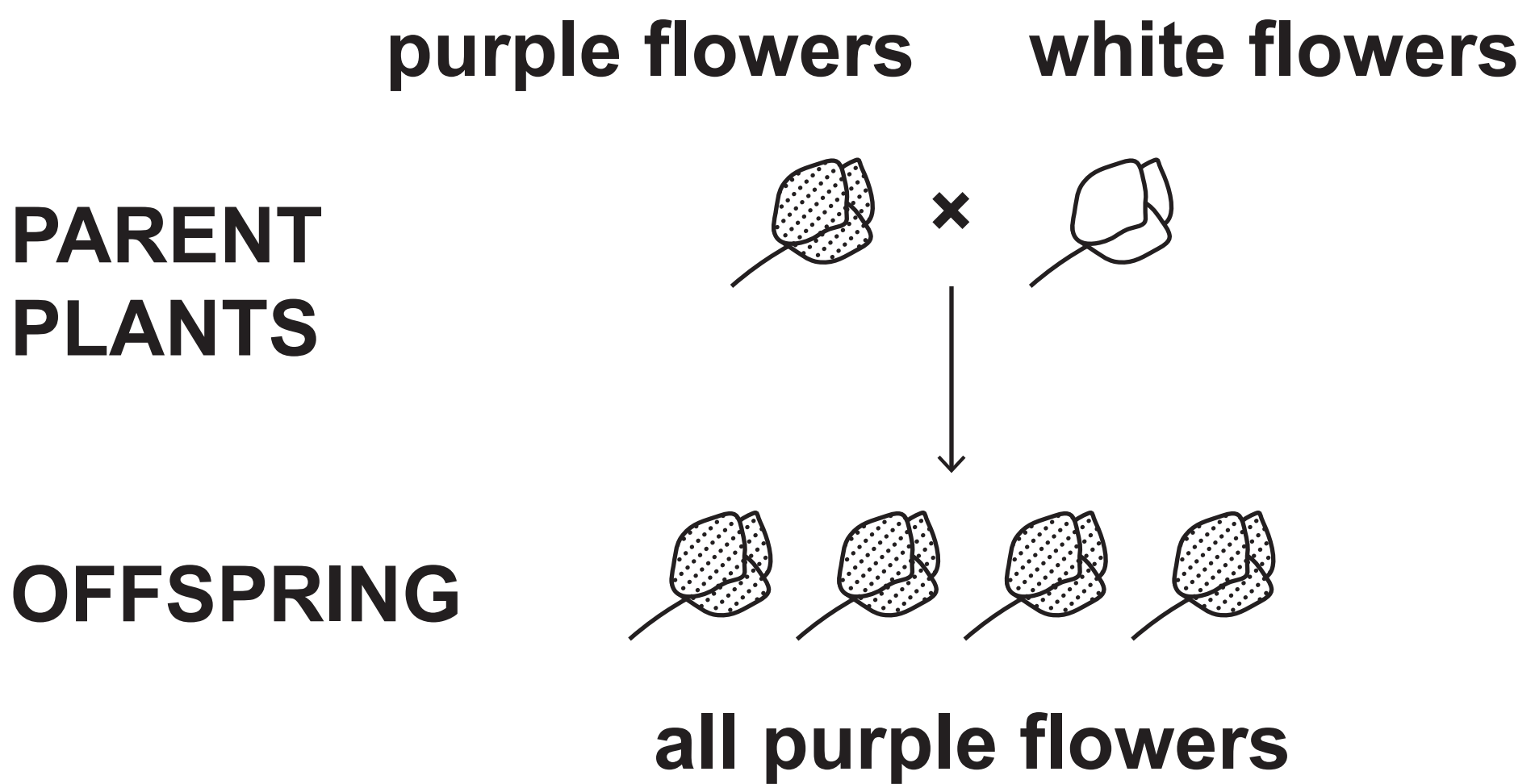
year	number of measles cases reported
1985	97 408
1995	7 447
2005	2 089
2015	1 193

FIGURE 18



Question 10(a)

FIGURE 19



Question 10(a)(iii)

white flowers			
		A	a
purple flowers			

Question 1(b)

body defence

hydrochloric
acid

skin

function

moves pathogens
away from
the lungs

makes antibodies

destroys
pathogens in
the stomach

makes antigens

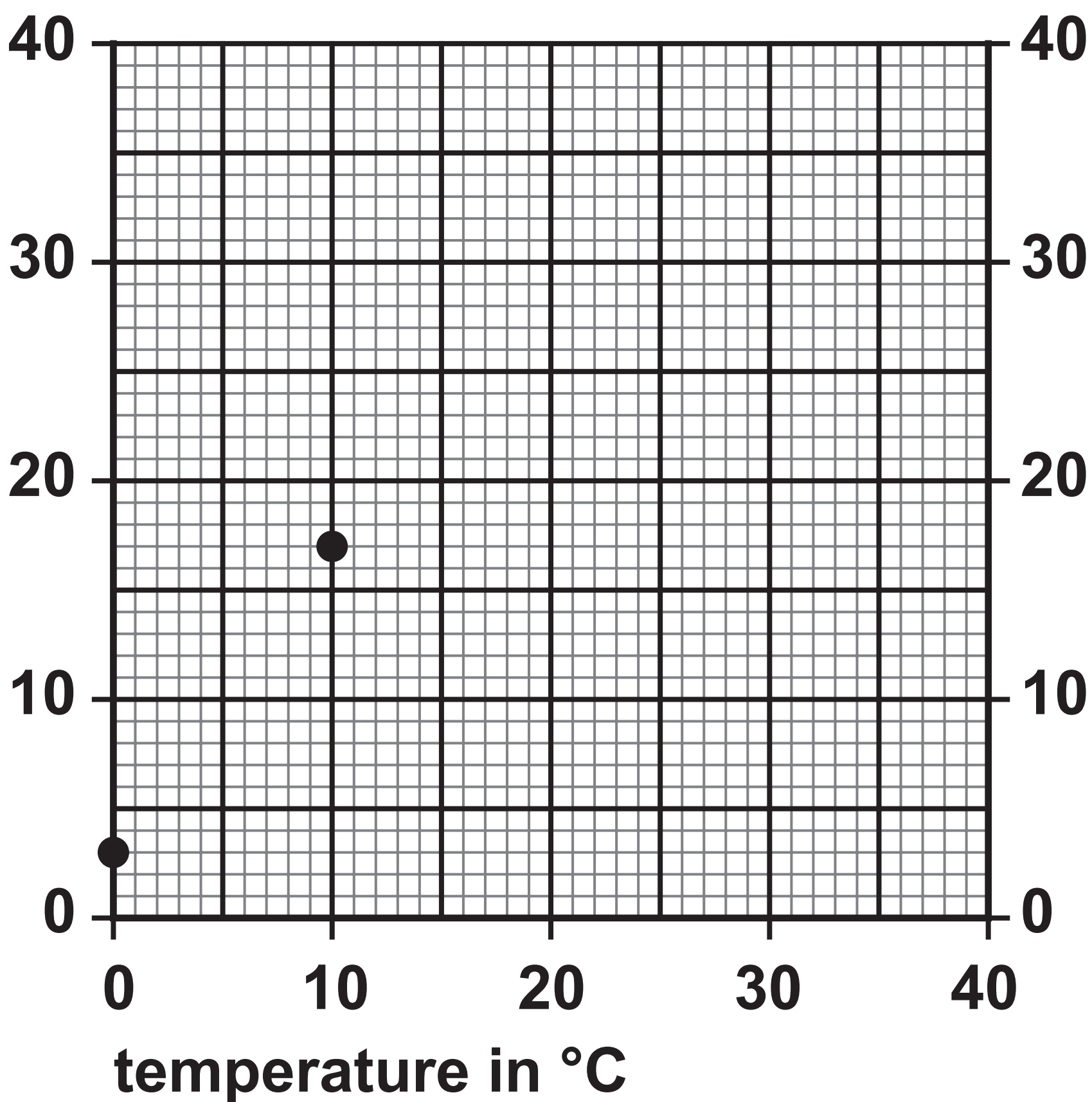
stops pathogens
entering the body

Question 4(c)

type of cell produced	type of cell division	number of daughter cells produced
body cell	mitosis	
gamete		

Question 8(a)

rate of reaction
in mg per minute



Question 10(a)(iii)

white flowers			
		A	a
purple flowers			

Question 4

(Source: © Jamil Bin Mat Isa/Shutterstock)

(Source: © Tsekhmister/Shutterstock)

Question 6(d)

**(Source adapted from: © John Kepchar/
Shutterstock)**

**(Source adapted from: © Eduardo Estellez/
Shutterstock)**

Question 7(c)

**(Source adapted from: © Redmond135/
Shutterstock)**

**(Source adapted from: ©
captureandcompose/Shutterstock)**